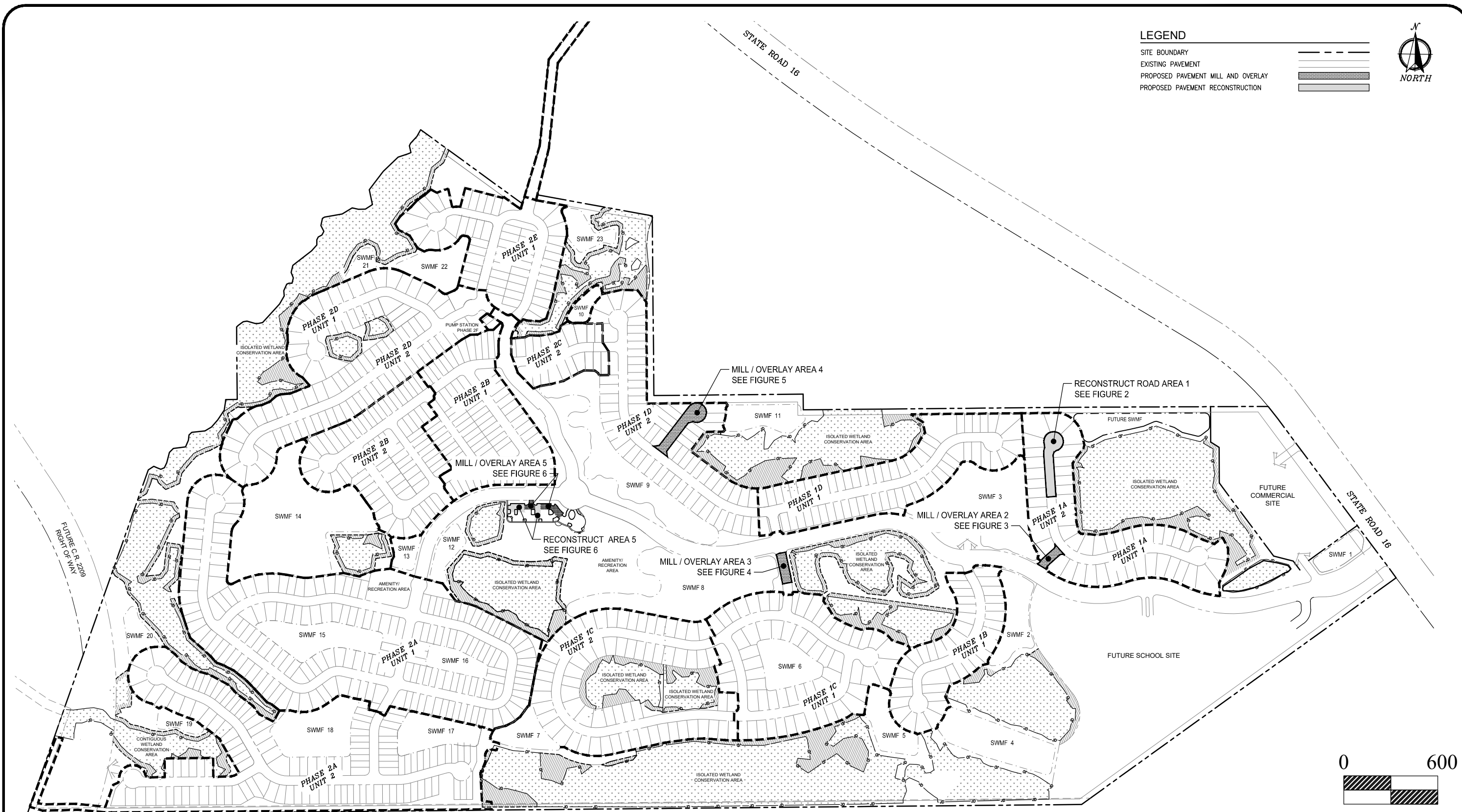


**LEGEND**

- SITE BOUNDARY
- EXISTING PAVEMENT
- PROPOSED PAVEMENT MILL AND OVERLAY
- PROPOSED PAVEMENT RECONSTRUCTION



Z:\General Civil\Southeast Dev\Smith Ranch\Cadd\design\Phase 1A\Repave Figure\REPAVE GRAND OAKS OVERALL LAYOUT-FIG 1.dwg (FIG 1) 1/25/2024 11:19



DOMINION ENGINEERING GROUP, INC.  
4348 SOUTHPOINT BLVD., SUITE 201  
JACKSONVILLE, FLORIDA 32216

# PAVEMENT REPAIR MASTER PLAN

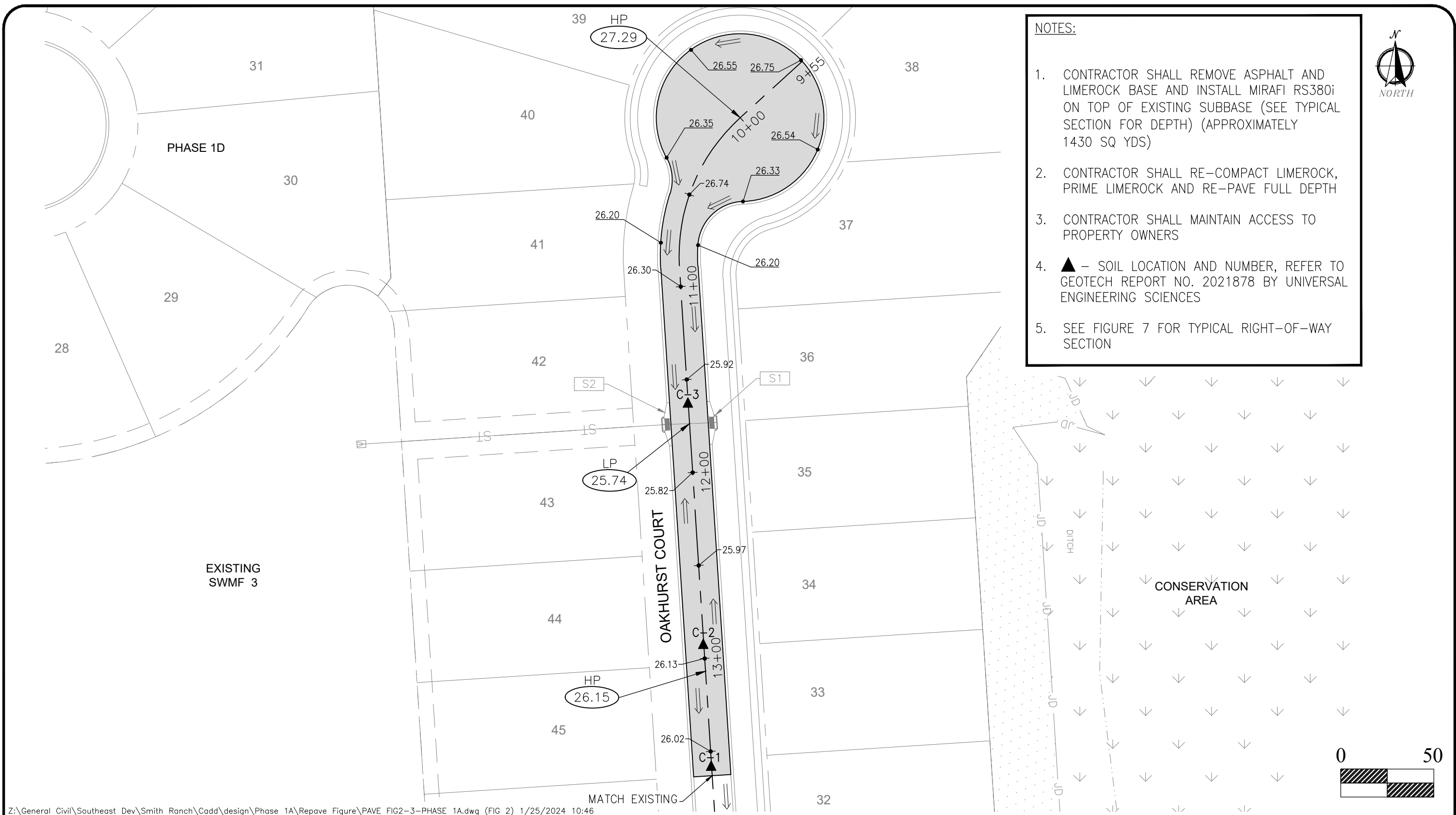
GRAND OAKS SUBDIVISION  
ST. JOHNS COUNTY

Figure: FIG-1

Job Number:

Scale: AS NOTED

Date: 01/04/24



- NOTES:**
1. CONTRACTOR SHALL REMOVE ASPHALT AND LIMEROCK BASE AND INSTALL MIRAFI RS380i ON TOP OF EXISTING SUBBASE (SEE TYPICAL SECTION FOR DEPTH) (APPROXIMATELY 1430 SQ YDS)
  2. CONTRACTOR SHALL RE-COMPACT LIMEROCK, PRIME LIMEROCK AND RE-PAVE FULL DEPTH
  3. CONTRACTOR SHALL MAINTAIN ACCESS TO PROPERTY OWNERS
  4. ▲ - SOIL LOCATION AND NUMBER, REFER TO GEOTECH REPORT NO. 2021878 BY UNIVERSAL ENGINEERING SCIENCES
  5. SEE FIGURE 7 FOR TYPICAL RIGHT-OF-WAY SECTION

Z:\General Civil\Southeast Dev\Smith Ranch\Cadd\design\Phase 1A\Repave Figure\PAVE FIG2-3-PHASE 1A.dwg (FIG 2) 1/25/2024 10:46



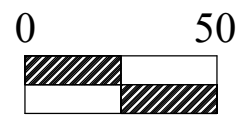
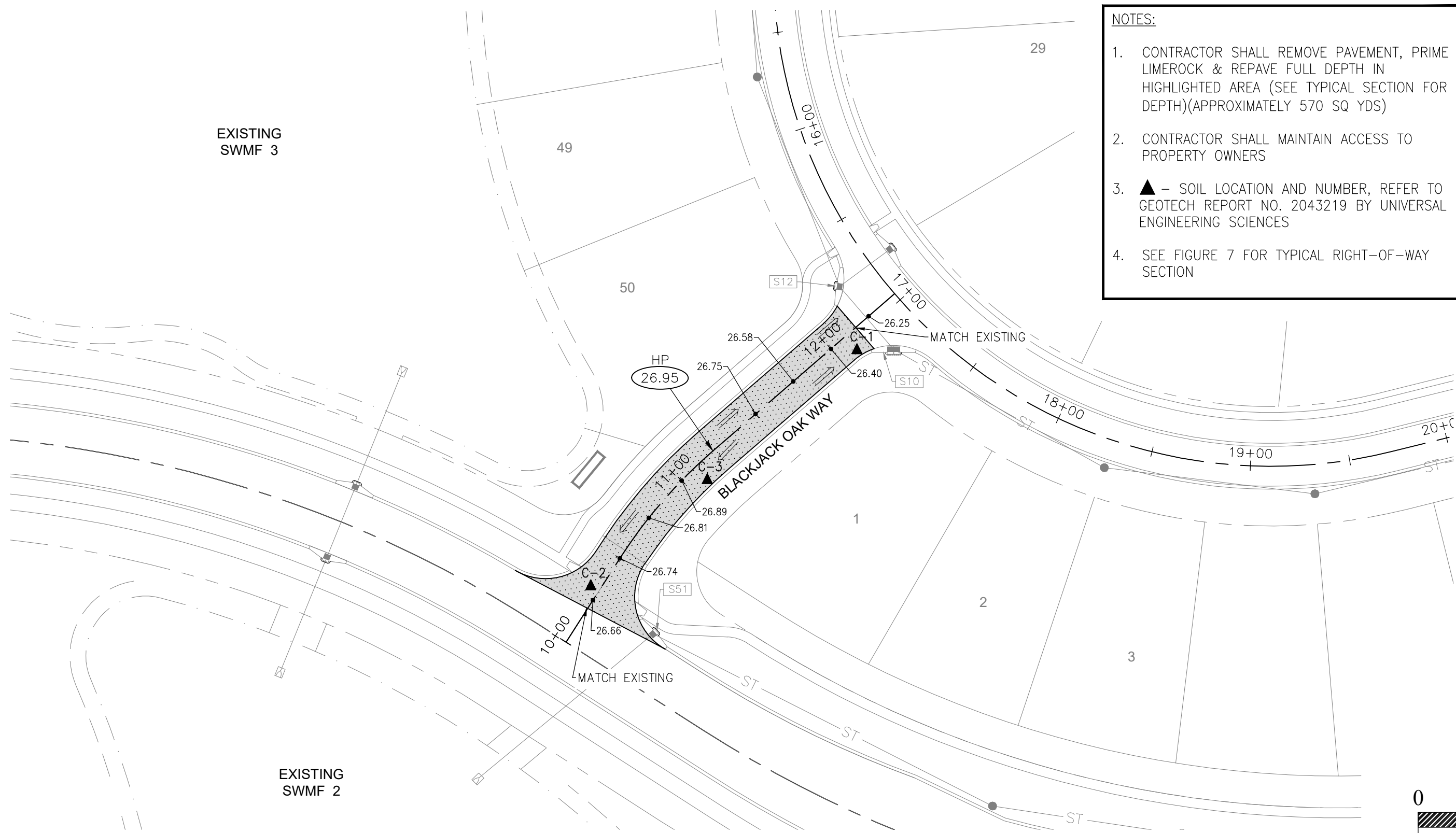
## PAVEMENT REPAIR

GRAND OAKS SUBDIVISION  
ST. JOHNS COUNTY

Figure: <b>FIG-2</b>
Job Number:
Scale: <b>AS NOTED</b>
Date: <b>01/16/24</b>



- NOTES:
1. CONTRACTOR SHALL REMOVE PAVEMENT, PRIME LIMEROCK & REPAVE FULL DEPTH IN HIGHLIGHTED AREA (SEE TYPICAL SECTION FOR DEPTH)(APPROXIMATELY 570 SQ YDS)
  2. CONTRACTOR SHALL MAINTAIN ACCESS TO PROPERTY OWNERS
  3. ▲ - SOIL LOCATION AND NUMBER, REFER TO GEOTECH REPORT NO. 2043219 BY UNIVERSAL ENGINEERING SCIENCES
  4. SEE FIGURE 7 FOR TYPICAL RIGHT-OF-WAY SECTION



Z:\General Civil\Southeast Dev\Smith Ranch\Cadd\design\Phase 1A\Repave Figure\PAVE FIG2-3-PHASE 1A.dwg (FIG 3) 1/25/2024 10:46



DOMINION ENGINEERING GROUP, INC.  
4348 SOUTHPPOINT BLVD., SUITE 201  
JACKSONVILLE, FLORIDA 32216

## PAVEMENT REPAIR

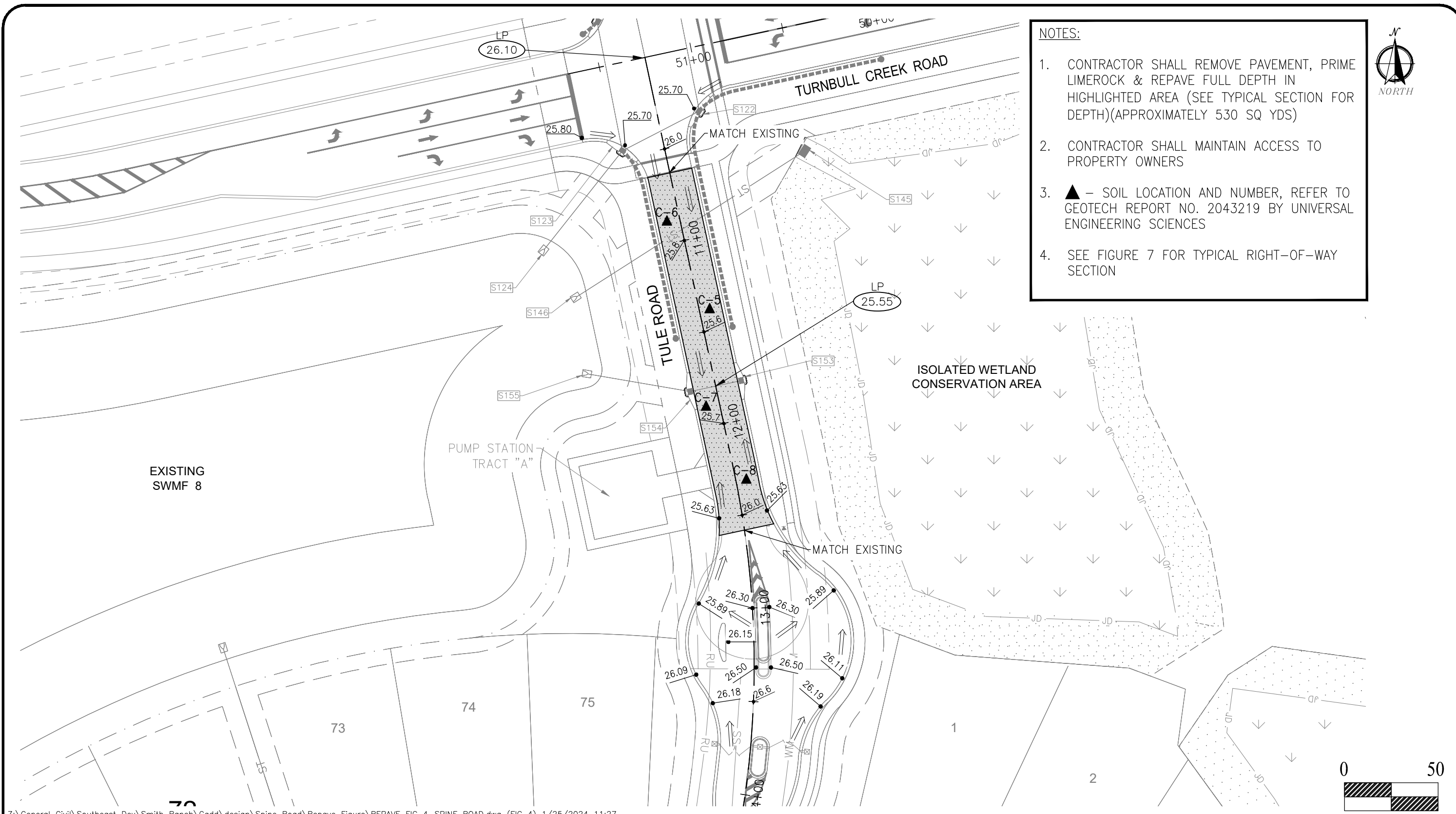
GRAND OAKS SUBDIVISION  
ST. JOHNS COUNTY

Figure: FIG-3

Job Number:

Scale: AS NOTED

Date: 01/16/24



- NOTES:
1. CONTRACTOR SHALL REMOVE PAVEMENT, PRIME LIMEROCK & REPAVE FULL DEPTH IN HIGHLIGHTED AREA (SEE TYPICAL SECTION FOR DEPTH)(APPROXIMATELY 530 SQ YDS)
  2. CONTRACTOR SHALL MAINTAIN ACCESS TO PROPERTY OWNERS
  3. ▲ - SOIL LOCATION AND NUMBER, REFER TO GEOTECH REPORT NO. 2043219 BY UNIVERSAL ENGINEERING SCIENCES
  4. SEE FIGURE 7 FOR TYPICAL RIGHT-OF-WAY SECTION

Z:\General Civil\Southeast Dev\Smith Ranch\Cadd\design\Spine Road\Repave Figure\REPAVE FIG 4-SPINE ROAD.dwg (FIG 4) 1/25/2024 11:27

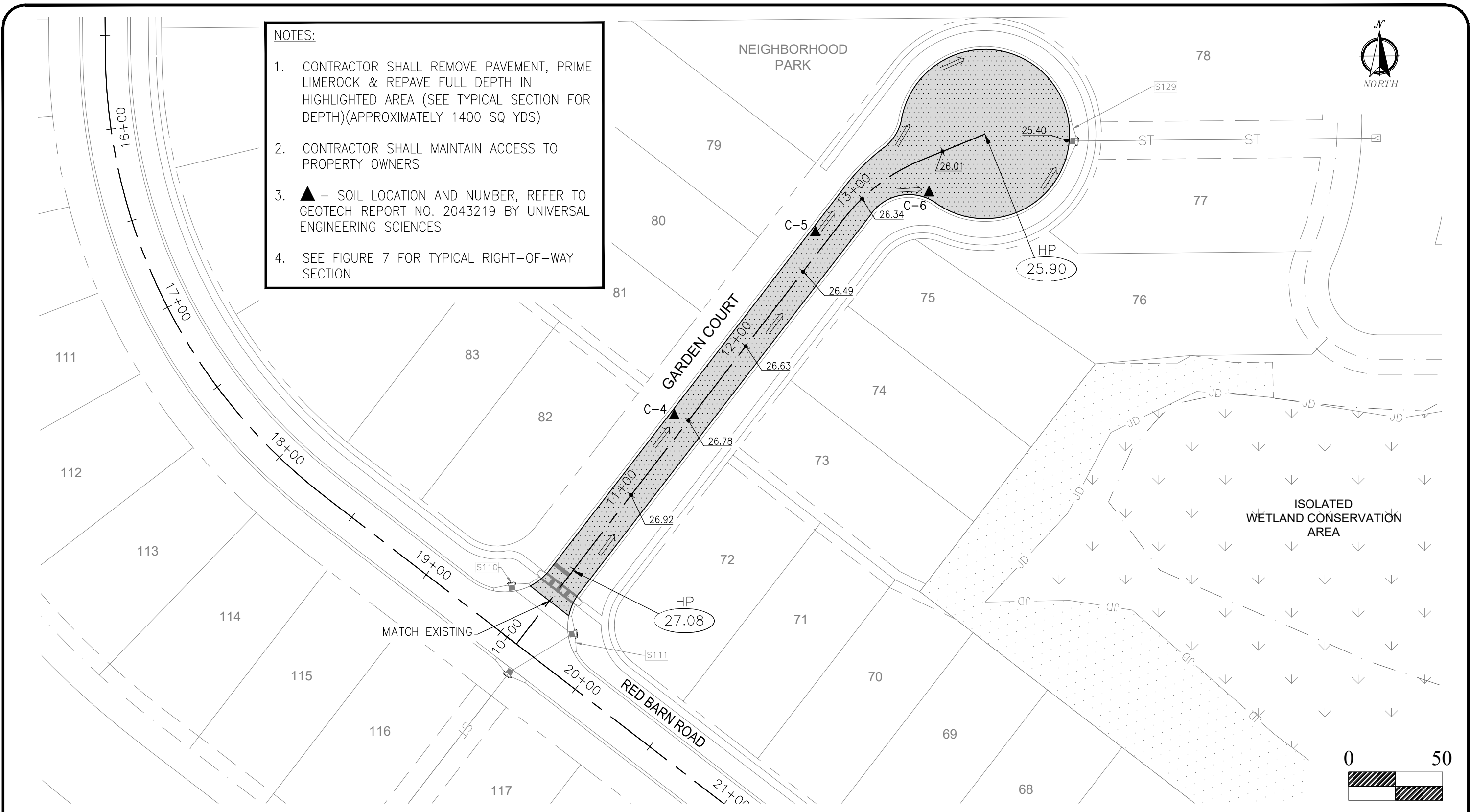
DOMINION ENGINEERING GROUP, INC.  
 4348 SOUTHPPOINT BLVD., SUITE 201  
 JACKSONVILLE, FLORIDA 32216

## PAVEMENT REPAIR

GRAND OAKS SUBDIVISION  
 ST. JOHNS COUNTY

Figure: <b>FIG-4</b>
Job Number:
Scale: <b>AS NOTED</b>
Date: <b>01/04/24</b>

- NOTES:**
1. CONTRACTOR SHALL REMOVE PAVEMENT, PRIME LIMEROCK & REPAVE FULL DEPTH IN HIGHLIGHTED AREA (SEE TYPICAL SECTION FOR DEPTH)(APPROXIMATELY 1400 SQ YDS)
  2. CONTRACTOR SHALL MAINTAIN ACCESS TO PROPERTY OWNERS
  3. ▲ - SOIL LOCATION AND NUMBER, REFER TO GEOTECH REPORT NO. 2043219 BY UNIVERSAL ENGINEERING SCIENCES
  4. SEE FIGURE 7 FOR TYPICAL RIGHT-OF-WAY SECTION



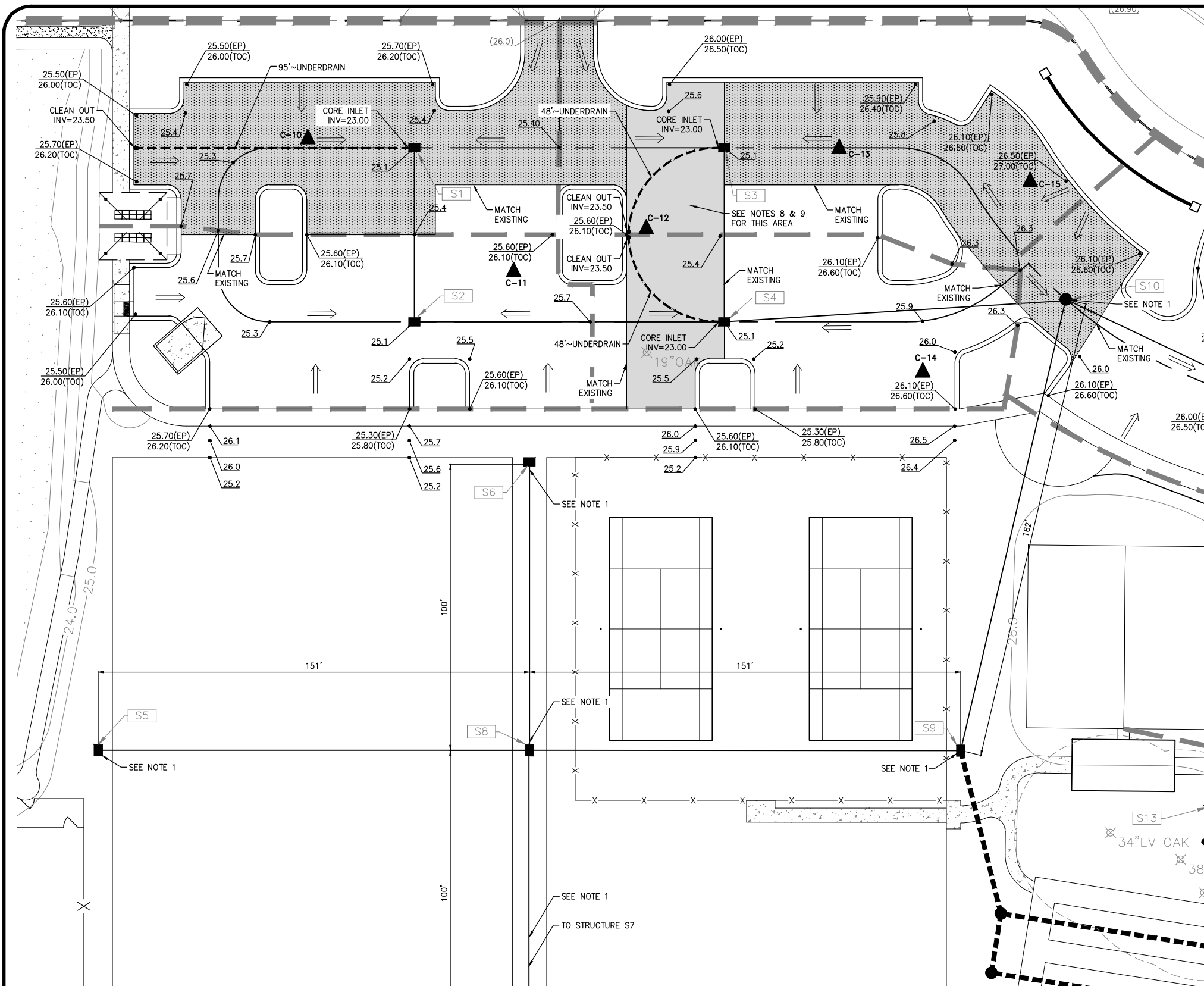
Z:\General Civil\Southeast Dev\Smith Ranch\Cadd\design\Phase 1D-2\Repave Figure\PAVE FIG 5-PHASE 1D.dwg (FIG5) 1/25/2024 11:29



## PAVEMENT REPAIR

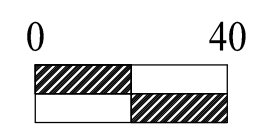
GRAND OAKS SUBDIVISION  
ST. JOHNS COUNTY

Figure: <b>FIG-5</b>
Job Number:
Scale: <b>AS NOTED</b>
Date: <b>01/04/24</b>



LEGEND	
SITE BOUNDARY	---
EXISTING PAVEMENT	▬▬▬▬
PROPOSED RECONSTRUCTION	▬▬▬▬▬▬
PROPOSED MILLING AND RESURFACING PAVEMENT	▬▬▬▬▬▬▬▬
EXISTING SPOT ELEVATION	● 33.00
PROPOSED ROAD ELEVATION	○ 26.50
EXISTING ELEVATION	○ 32.0
PROPOSED ELEVATION	○ 36.0
MAJOR DRAINAGE DIVIDE	▬▬▬▬▬▬
MINOR DRAINAGE DIVIDE	▬▬▬▬▬▬▬▬
PROPOSED DRAINAGE FLOW	→
EXISTING DRAINAGE FLOW	→
EXISTING INLET	■
EXISTING INLET ID	■ S1

- NOTES:**
- STRUCTURES S5, S6, S7, S8, S9 AND S10 AND PIPE RUNS SHALL BE CLEANED OUT FROM ALL DEBRIS
  - CONTRACTOR SHALL RE-STRIPE THE PARKING LOT
  - REMOVE AND REPLACE PAVEMENT APPROXIMATELY 1,508 SQ YDS
  - CONTRACTOR SHALL INSTALL UNDERDRAIN AND CLEANOUTS AS SHOWN (SEE FIG 7 FOR DETAIL)
  - ▲ - SOIL LOCATION AND NUMBER, REFER TO GEOTECH REPORT NO. 2043219 BY UNIVERSAL ENGINEERING SCIENCES
  - LIMEROCK TO BE PRIMED BEFORE PAVING
  - CONTRACTOR SHALL REMOVE ASPHALT AND LIMEROCK BASE AND INSTALL MIRAFI RS380i ON TOP OF EXISTING SUBBASE, RECONSTRUCTION AREA APPROXIMATELY 417 SQ YDS
  - CONTRACTOR SHALL RE-COMPACT LIMEROCK, PRIME LIMEROCK AND RE-PAVE FULL DEPTH
  - SEE FIGURE 7 FOR PAVEMENT SECTIONS



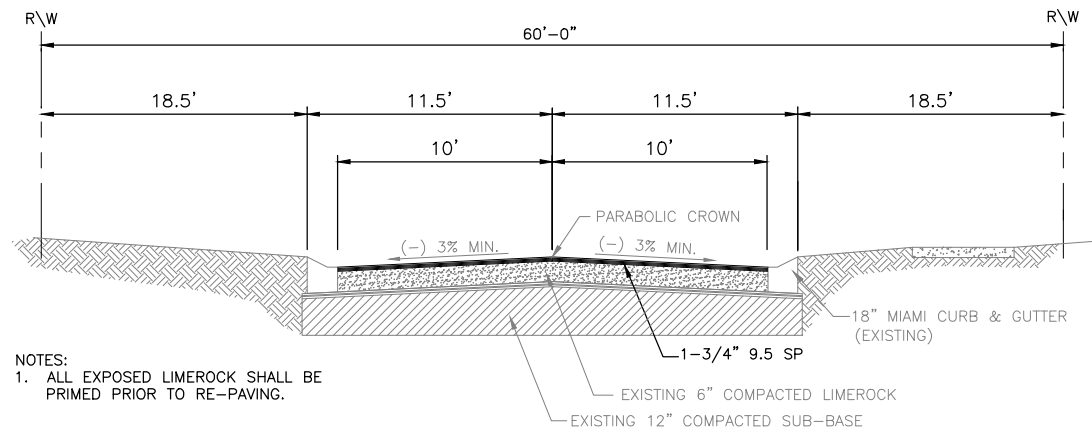
Z:\General Civil\Southeast Dev\Grand Oaks Large Amenity\Cadd\design\Milling & Resurfacing\REV\_DRN - GRAND OAKS - AMENITY LARGE.dwg (FIG 6) 1/25/2024 11:00



# PAVEMENT REPAIR

GRAND OAKS SUBDIVISION  
ST. JOHNS COUNTY

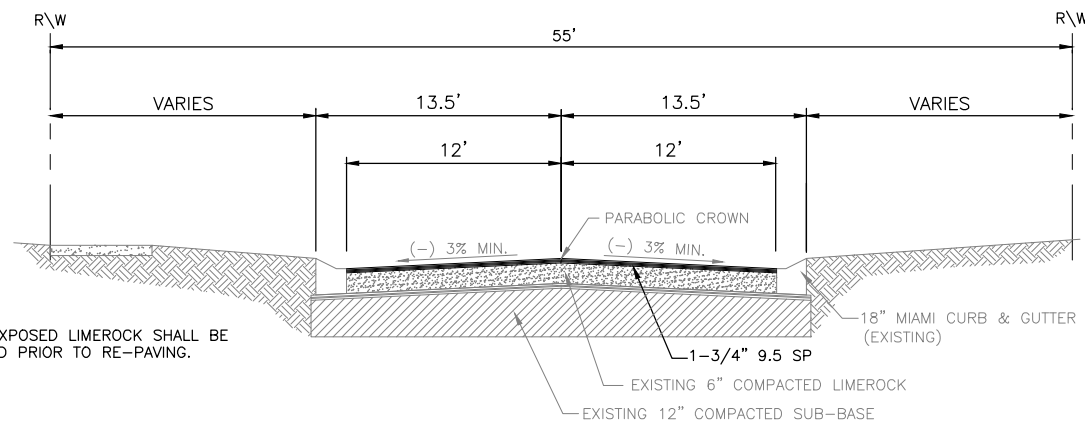
Figure: FIG-6
Job Number:
Scale: AS NOTED
Date: 01/16/24



NOTES:  
1. ALL EXPOSED LIMEROCK SHALL BE PRIMED PRIOR TO RE-PAVING.

**GARDEN COURT  
TYPICAL ROADWAY SECTION**

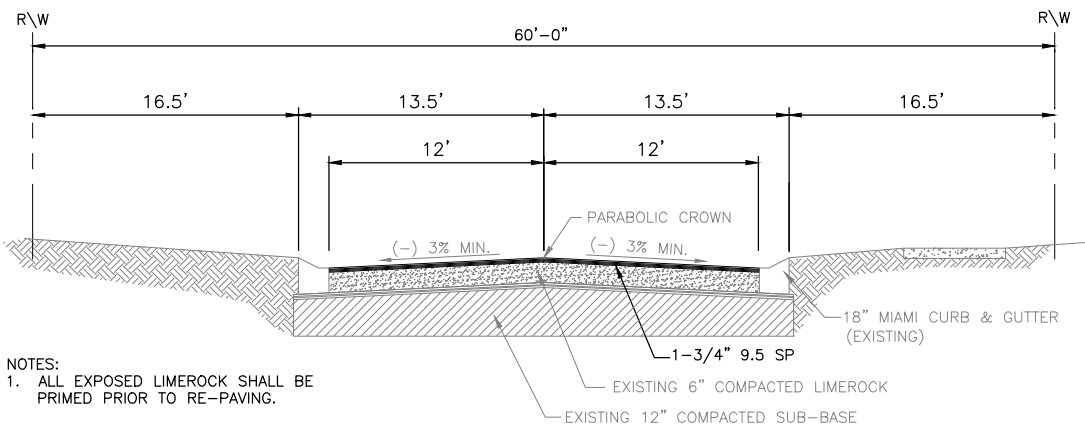
N.T.S.



NOTES:  
1. ALL EXPOSED LIMEROCK SHALL BE PRIMED PRIOR TO RE-PAVING.

**BLACKJACK OAK WAY  
TYPICAL ROADWAY SECTION**

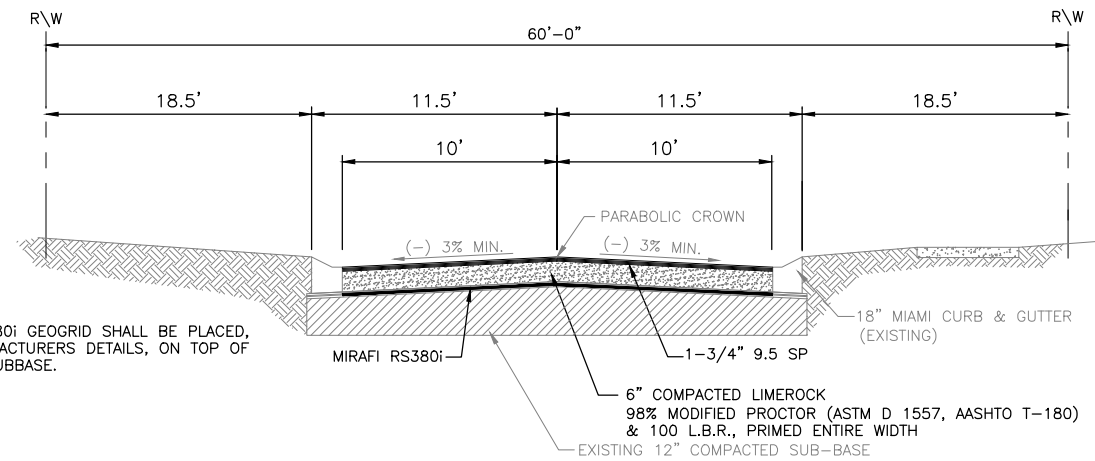
N.T.S.



NOTES:  
1. ALL EXPOSED LIMEROCK SHALL BE PRIMED PRIOR TO RE-PAVING.

**TULE ROAD  
TYPICAL ROADWAY SECTION**

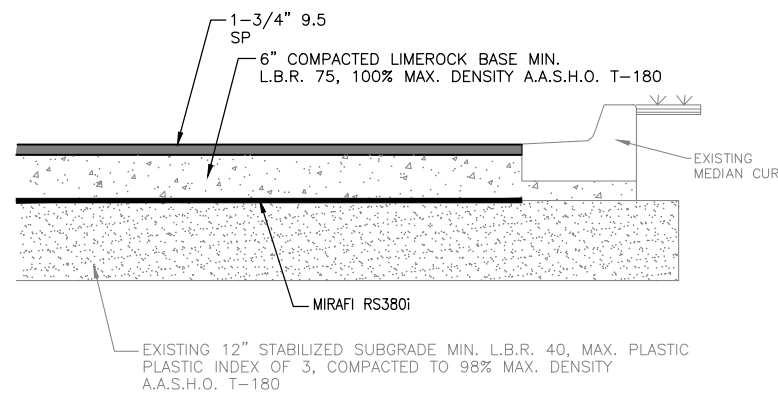
N.T.S.



NOTES:  
1. MIRAFI RS380i GEOGRID SHALL BE PLACED, PER MANUFACTURERS DETAILS, ON TOP OF EXISTING SUBBASE.

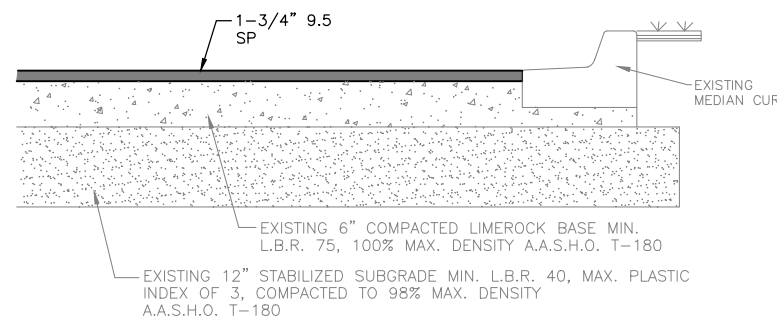
**OAKHURST COURT  
TYPICAL ROADWAY SECTION**

N.T.S.



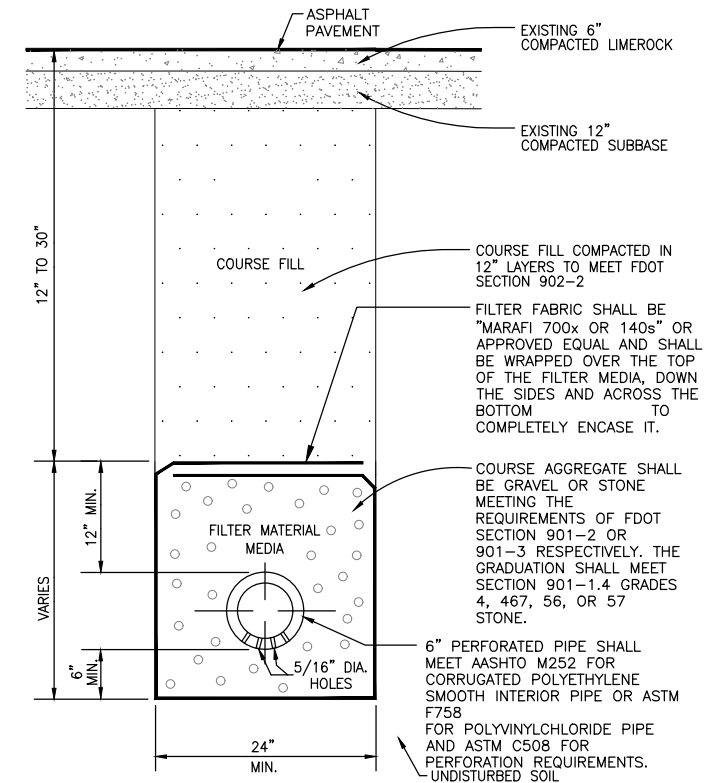
**AMENITY PARKING LOT  
TYPICAL PAVEMENT SECTION (RECONSTRUCT)**

N.T.S.



**AMENITY PARKING LOT  
TYPICAL PAVEMENT SECTION (MILL & OVERLAY)**

N.T.S.



NOTE: MINIMUM PIPE SLOPE OF 0.30%  
TYPE I UNDERDRAIN WITH MIRAFI 700x" IS TO BE USED WHERE MODERATE CHEMICAL CLOGGING OF FILTER MATERIAL IS EXPECTED.

**UNDERDRAIN INSTALLATION TYPE I**

N.T.S.

Z:\General Civil\Southeast Dev\Smith Ranch\Cadd\design\Phase 1A\Repave Figure\Pavement Repair Sections-FIG 7.dwg (FIG 7) 1/25/2024 11:15



DOMINION ENGINEERING GROUP, INC.  
4348 SOUTHPPOINT BLVD., SUITE 201  
JACKSONVILLE, FLORIDA 32216

# PAVEMENT REPAIR

GRAND OAKS SUBDIVISION  
ST. JOHNS COUNTY

Figure: **FIG-7**

Job Number:

Scale: **AS NOTED**

Date: **01/16/24**